



Product Code: 751737

PRO-3 CABLE RAMP

Protect cables and reduce trip hazards

pittman[®]

OVERVIEW

The Pro-3 Cable Ramp offers a durable and flexible solution for protecting cables in high-traffic environments. Its sturdy construction supports heavy loads, making it ideal for industrial and commercial settings. The maximum weight capacity is 9,000 kg per axle.

The ramp's modular, interlocking design ensures easy setup and customisation, allowing you to extend coverage as needed. With a bright yellow cover, it provides high visibility to reduce trip hazards and keep both workers and equipment safe.

The ramp is designed for convenience, featuring an integrated handle for quick transportation. Plus, its compliance with safety standards ensures it meets the necessary regulations, giving you peace of mind while maintaining a safe and organised workspace.

PRODUCT FEATURES

- Cable protection - includes 3 channels with space for cables up to Ø 50mm
- Heavy-duty - supports heavy loads up to 9000kg per axle
- Long-lasting - strong polyethylene design made for demanding settings
- Hi-vis - yellow lid ensures high visibility while in use
- Modular - easy interlocking design to join multiple cable ramps together

TECHNICAL DATA

SPECIFICATION	DETAILS
Material:	Polyethylene
Color:	Black ramp with yellow lid
Length:	900mm
Height:	70mm
Width:	500mm
Weight	17kg

Max. cable diameter Ø 50mm

Applications

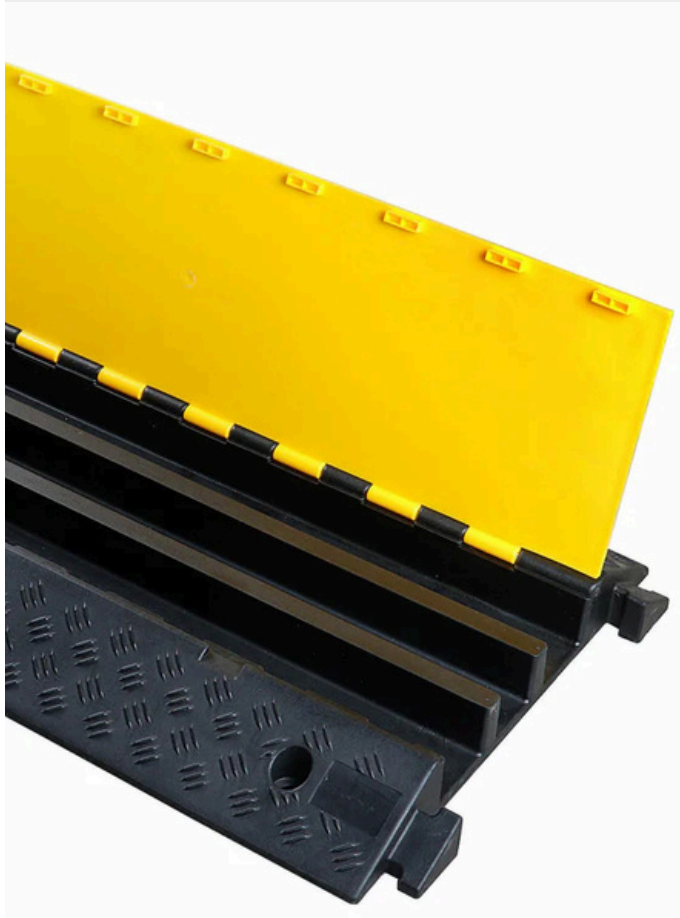
Wide range of applications including; commercial and industrial facilities, events, shopping centres, hotels and schools



Hi-Vis and Anti-Slip
Lid ensures high visibility with pattern surface for better grip



Interlocking design
Includes male/female connection points for easy connection



INSTRUCTIONS FOR USE

- 1. Measure the Cable:** Measure the length of cable that needs to be protected and choose the appropriate amount of cable ramps needed.
- 2. Prepare the Area:** Clear the area of all debris to ensure the cable ramp has a sturdy base to sit on.
- 3. Install the Ramp:** Lay each section of the ramp and join using the integrated connectors.

Ready for Use: Once the ramp is installed, place the cable inside ready for immediate use.